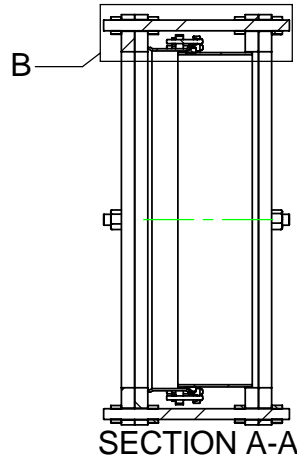
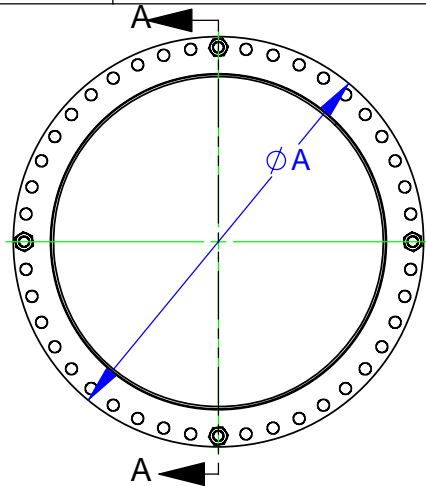
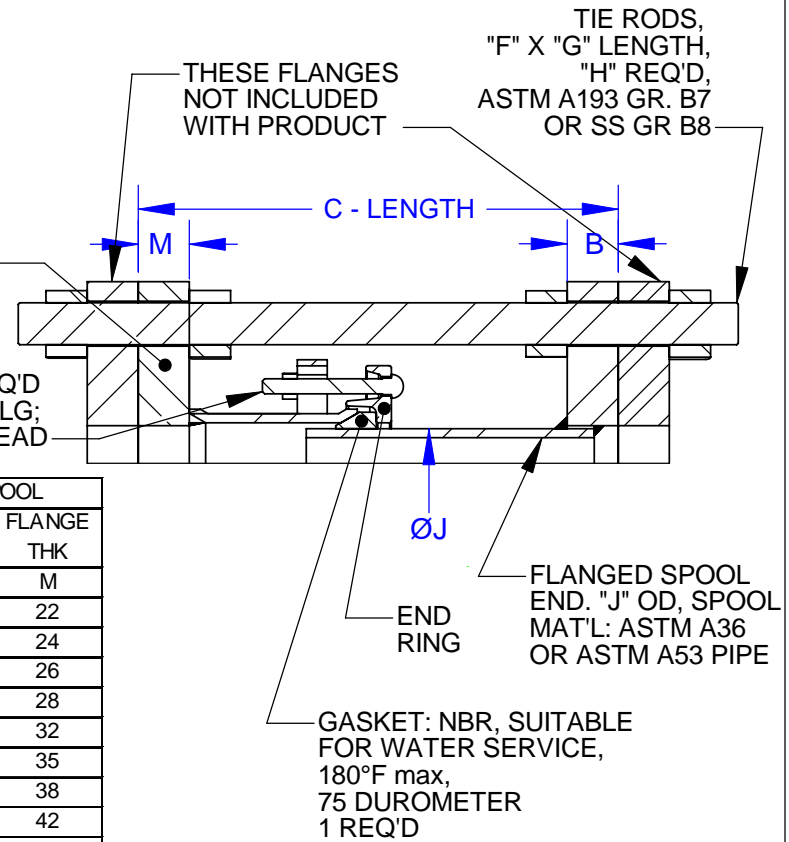


B3239-A



ISO 7005 PN-16  
RING FLANGE,  
2 REQ'D

BOLTS, "D" REQ'D  
"E" SIZE X 5.0 LG;  
TRACK HEAD



NOM SIZE	DIMENSIONS (MM)					BOLTS		TIE RODS				SPOOL	
	FLANGE OD	FLANGE THK	C - LENGTH			QTY	SIZE (UNC)	SIZE	LENGTH	B7 QTY	SS QTY	OD	FLANGE THK
	A	B	NOM.	MIN.	MAX.	D	E	F	G	H	H	J	M
100	220	22	324	286	362	4	5/8 - 11	M16	465	2	2	114.3	22
150	285	24	330	292	368	5	5/8 - 11	M20	485	2	2	168.3	24
200	340	26	337	298	375	6	5/8 - 11	M20	500	2	2	219.1	26
250	405	28	343	305	381	6	5/8 - 11	M24	515	2	2	273.1	28
300	460	32	349	311	387	8	5/8 - 11	M24	530	2	2	323.9	32
350	520	35	438	400	476	8	5/8 - 11	M24	625	2	4	355.6	35
400	580	38	445	406	483	10	5/8 - 11	M27	645	2	4	406.4	38
450	640	42	451	413	489	10	5/8 - 11	M27	655	4	4	457.2	42
500	715	46	464	425	502	12	5/8 - 11	M30	680	4	4	508.0	46
600	840	52	527	489	565	14	5/8 - 11	M33	765	4	4	609.6	52
700	910	60	546	508	584	16	5/8 - 11	M33	805	4	6	711.2	60
800	1025	68	578	540	616	16	5/8 - 11	M36	855	4	6	812.8	68
900	1125	76	591	552	629	18	5/8 - 11	M36	885	6	8	914.4	76
1000	1255	84	610	572	648	20	5/8 - 11	M39	925	6	8	1016.0	84
1200	1485	98	660	622	699	22	5/8 - 11	M45	1020	6	8	1219.2	98
1400	1685	145	756	718	794	26	5/8 - 11	M45	1205	6	10	1371.6	145
1500	1820	153	775	737	813	28	5/8 - 11	M52	1255	6	10	1524.0	153
1600	1930	160	794	756	832	28	5/8 - 11	M52	1285	6	10	1524.0	160
1800	2130	170	813	775	851	32	5/8 - 11	M52	1325	8	12	1828.8	170

NOTES:

- COATING: FUSION BONDED EPOXY IS STANDARD. OTHER COATINGS AVAILABLE.
- FASTENERS: HSLA. STAINLESS STEEL IS OPTIONAL.
- PRESSURE RATED UP TO PN-16 FLANGES PROVIDED. (232 PSI)
- WHEN INSTALLING, POSITION THE FLANGED COUPLING END IN THE REQUIRED LOCATION & THEN FOLLOW BOLTING INSTRUCTIONS.
- NOT INTENDED TO PROVIDE LATERAL MOVEMENT IN PIPELINE.

DETAIL B

PROPRIETARY NOTICE

THIS DRAWING CONTAINS CONFIDENTIAL PROPRIETARY INFORMATION AND IS THE PROPERTY OF ROMAC IND., INC. IT IS TO BE USED ONLY FOR THE PURPOSE FOR WHICH IS WAS SUBMITTED AND SHALL NOT HAVE IT'S INFORMATION DISCLOSED OR REPRODUCED IN WHOLE OR IN PART FOR ANY PURPOSE WITHOUT PRIOR WRITTEN PERMISSION OF ROMAC IND., INC.

UNLESS OTHERWISE SPECIFIED

DIMENSIONS ARE IN INCHES

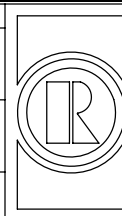
TOLERANCES ARE ON:  
1 PL DECIMALS ± .060  
2 PL DECIMALS ± .030  
3 PL DECIMALS ± .010  
ANGLES ± 1°  
FRACTIONS ± 1/64

SIGNATURES

DRAWN

CHECKED

APPROVAL ORGANIZATIONS  
PROP.CUST.APP. ORG.



ROMAC INDUSTRIES INC.,  
BOTHELL, WA

TITLE

DJ400 - 100MM - 1800MM,  
ISO 7005 PN 16 FLANGE

DWG. NO.	SIZE	REV. NO.	SCALE	SHEET
B3239-A	A	0	NTS	1 OF 1